



# SINGLE SOURCE MAINTENANCE

Precision Repair & Maintenance Today, *Reliable Results Tomorrow...*



*All basic engineering facility Maintenance services  
& solutions under one roof*



**Machinery's best friend  
Right the first time-on time-Every time**



 : <http://www.ssmsolutions.in/>



# Take maintenance to the next level

## What we serve

- ✓ Hello and welcome to Single source Maintenance, we intend to Care, Quality and Service.
- ✓ We are passionate providers of Equipment and M/cs repair & maintenance, refurbishment/overhaul & reconditioning/retrofit/upgradation/revamp/modification including Mechanical, Electrical, Electronics, Hydraulic, Pneumatic, PLC Programming, Comprehensive /Non-comprehensive AMC, Moves & Re-installation, Erection & commissioning, Fabrication work, plus many more services quickly, efficiently, safely and cost effective in the Industrial sectors to meet customer specifications.
- ✓ With many years of experience in the Engineering industry and a “Nothing but the best” approach to our work, we are confident in receiving the Quality, Service and Customer care you expect at the right price.

## Who are we

- ✓ This would be the best opportunity to introduce ourselves as a service providing organization as “SINGLE SOURCE MAINTENANCE” in manufacturing and service sector based in VADODARA.  
“SINGLE SOURCE MAINTENANCE” is established in 2023 & facility is plan to locate in manjusar G.I.D.C.
- ✓ We are proprietor base organization started by two young dynamic mechanical engineers Mr. Pratik shah (B.E. Mechanical) & Mr. Mayur Patel (B.E. Mechanical) with the goal of providing best service in the field of maintenance & enhancing the productivity by using our knowledge, skills, and experience.
- ✓ The company consists of a well-trained & qualified engineer & technicians.
- ✓ We started with one draughtsman, technician, experience, and outstanding professional relationships has now been transformed into an engineering house with an extensive service offering and soon-to-launch product range.
- ✓ “We notice everything and have immense confidence in the solutions & put on the table”.  
Being a technically sound organization, we help you shape a complex situation in simple.  
We are also available to provide our own engineering staff to consult if desired.  
We also provide 24x7 care through planned and unplanned maintenance works, enabling clients to extract maximum value.
- ✓ we've always believed in finding innovative and sustainable solutions to make life easier for our clients.

## Our Vision



- ✓ We strive to provide quality and value-added complete facility solutions in manufacturing & service sector. We measure our success by company growth and the retention of customers.
- ✓ To maintain client satisfaction as all the times with superior workmanship, services, quality products and on time delivery.
- ✓ To continuously develop innovations and engineering knowledge to further support and add value to its business.
- ✓ Optimize equipment performance and reliability to ensure maximum uptime.

## Our Mission



- ✓ Deliver excellence in Repair & Maintenance services and workmanship in a safe, reliable, efficient and environmentally sound manner by optimizing resources.
- ✓ Our highly trained team have the necessary resources that are available 24x7 to react quickly and offer compelling solutions to minimize downtime and prioritize high grade output that will continue a long-term commitment to our customers.
- ✓ Utilize the engineering skills and maintenance knowledge of our professional engineers, supervisors to provide sound advice and effective maintenance strategies.

## Quality Policy

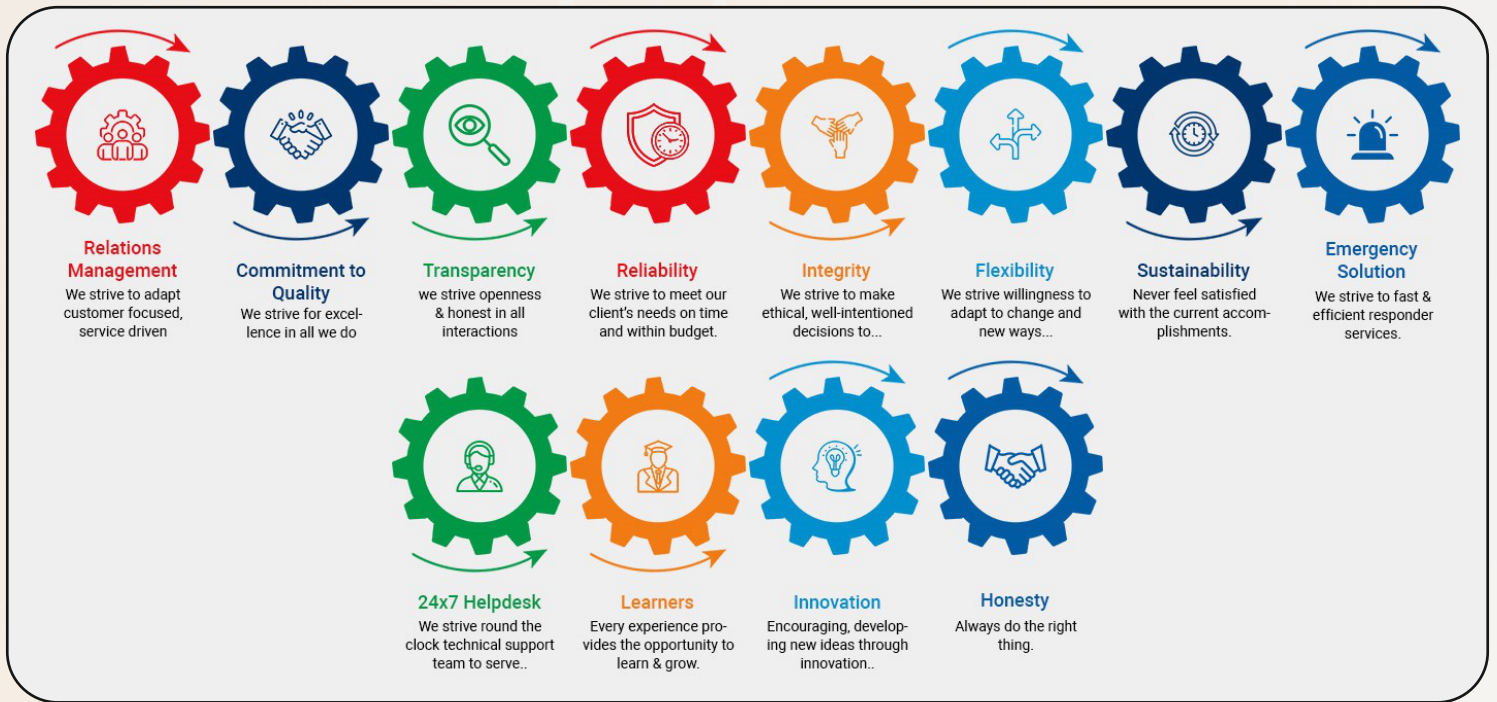


- ✓ Single Source Maintenance is committed to the Quality of the commercialization of parts and the provision of equipment repair & maintenance services, by making the following commitments:
- ✓ To build long-term customer relationships & delivering superior quality workmanship and service.
- ✓ To optimum utilization through identify & implement possible correct efficient & cost-effective services & solutions on time.
- ✓ To satisfy the needs and expectations of our customers through accomplish with compliance obligations, agreed delivery times, and other applicable requirements established by customers and other interested parties.



## Our Values

We are working together to innovate and grow. Here are the central values that drive us.



## Our Skilled Staff

- ✓ Engineers
- ✓ Fitters & Turners
- ✓ Welders
- ✓ Machinists
- ✓ Electricians
- ✓ General trade labour

## Our Strength

- ✓ Fair & transparent pricing
- ✓ Excellent service
- ✓ Well-trained & qualified team
- ✓ Dedicated customer support team
- ✓ 24-hour emergency services

## Facilities Available (Machine Shop)

- ✓ Lathe 18" center Height
- ✓ Welding M/c for fabrication
- ✓ Radial drill M/c
- ✓ Milling M/c
- ✓ Surface Grinding M/c
- ✓ Band saw M/c
- ✓ Horizontal boring M/c having spindle Dia. 100 mm & (W x Lx H) mm & many more

## SERVICE SPECTRUM

- ✓ M/c Repair & Maintenance
  - ✓ M/c Overhauls/Refurbishment
  - ✓ M/c Revamp/up-gradation
  - ✓ Mechanical, Electrical, Electronics fault finding & troubleshooting
  - ✓ Hydraulic & Pneumatic fault finding & troubleshooting
  - ✓ Machinery Moves & Re-Installation
  - ✓ M/c Erection & Commissioning
  - ✓ Engineering parts Repair/Rework/Restoration
  - ✓ Manufacturing of Engineering spares & precision Machining works
  - ✓ One stop solution for all industrial trade/needs
  - ✓ EOT crane Repair & Maintenance
  - ✓ Annual Maintenance Contracts
  - ✓ Custom Engineering /Metal structural Fabrication works/services
  - ✓ Reverse Engineering (Design & Development)
- Thanks for our valuable customers/clients

## What our clients says

- ✓ "I would recommend SSM for Repair & Maintenance work anytime without hesitation and will definitely go back to them for future projects"
- ✓ "They are great problem solvers & offer clients feasible solutions to projects of any size".
- ✓ SSM solutions has helped my team and I stay on the same page. Previously, we were all over the board. Using SSM solutions has definitely saved us time & money.
- ✓ Discover the invaluable impact of SSM Solutions, a vital catalyst for our company's ongoing expansion. Highly recommended.
- ✓ Elevate your business with SSM Solutions - the ultimate choice for taking your company to new heights.



"Right the first time- on time- Every time"  
"Take maintenance to the next level"

## M/c Repair and Maintenance

No matter which industry you are in, both repair & maintenance are equally important for assets & equipment. We can help you to keep facility assets, equipment in good shape and performing efficiently, and avoid unplanned downtime or equipment failure.

We offer total repair and maintenance assistance for Plant Conventional & CNC M/cs.

Repairs are restoration work for when an asset breaks, gets damaged, or stops working.

Maintenance refers to routine activities and/or corrective or preventive repair done on assets to prevent damage and prolong the life expectancy.



## M/c Overhauls/Refurbishment

Our field service specialists are among the best in the industry with decades of time tested and proven capabilities. We have proven record in providing field services, anytime anywhere by virtue of our experience and expertise.

We are equipped with required Tools & Tackles, measuring & testing equipment to execute capital overhauls/refurbishment simultaneously at number of sites.

We execute on turnkey basis services by carrying-out complete overhauls/refurbishment for all types of conventional & CNC M/cs no matter who manufactured them originally.

Overhauls/refurbishment is a much-required service to keep the equipment healthy and in good operation. Various components get worn-out/damaged during operation which have to be rectified and reused.

Overhaul is to modernize, repair, renovate, or revise completely while refurbish is to rebuild or replenish with all new material; to restore to original (or better) working order and appearance.



## M/c Revamp/up-gradation

In the long operating life of facility machinery, components may undergo important enhancement and new technology injection and modernization can help improve equipment performance and reliability.

Sometimes, also plant requirements can change and revamping of existing equipment/ Machinery may be a cheaper and faster solution rather than buying a new machine.

We offer services to study the functionality to improve product performance, safety or functionality.



## M/C Fault finding & troubleshooting

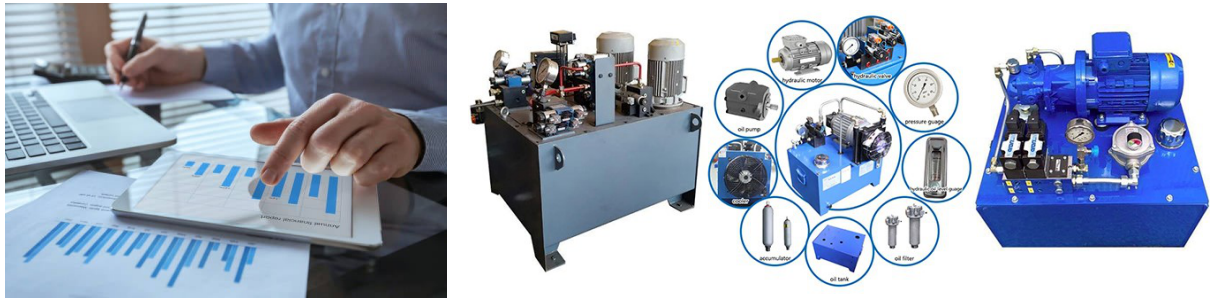
We offer Mechanical, Electrical, Electronics, Hydraulic & Pneumatic fault finding & troubleshooting services for facility equipment (conventional & CNC M/cs).

To provide technicians with the confidence and ability to identify and fix common faults, reducing downtime.

By using recognized methodologies, we can help quickly identify the root cause of a fault & provide a logical thought process to common equipment failures.

Fault diagnosis is the process of tracing a fault by means of its symptoms, applying knowledge, and analyzing test results.

Troubleshooting is a logical, systematic approach to solving a problem and make the process / equipment/ machine operational again.



## Machinery Moves & Re-Installation

We offer Industrial Moving Services to our customers to help them move smaller items of plant and machinery. We are able to move items up to 2-5 tons in weight.

We are also able to offer Industrial Moving Services to help move many other items such as office moving, Stock & inventory moving and many more upon request.



## M/c Erection and Commissioning

We provide plant machinery Erection and Commissioning Work to our esteemed clients as per their exact requirements.

These services are executed by an our highly qualified experts team equipped with latest technology and modern equipment.

We make sure that these services are executed without making any harm to any machines.

Customers can avail this cost-effective & qualitative service from us ensuring best execution within predeclared time frame.

We have track record with decades of proven ability in erection and commissioning of facility equipment (Conventional & CNC M/cs).



## Engineering Parts Repair/Rework/Restoration

We offer to provide services of all types of industrial M/cs mechanical parts to repair/rework/restoration by the re-machining to a serviceable condition (Good for intended use) by competent persons.



## Manufacturing of Engineering Spares & Precision Machining works

We are the alternative to the Original Equipment Manufacturer for manufacturing and supply of various essential spares required for the customer's equipment.

We manufacture the components from customer supplied samples. When the components cannot be spared, our Technical team will visit site during overhauls and obtain all necessary information by reverse engineering if required.



## One stop solution for all industrial trade/needs

We offer Engineering spare parts (Electronics, Electrical, mechanical, Pneumatics spare parts & many others) in extremely reliable and qualitative range of products as per the industry set standards and in diverse specifications and are plan to recognized in market for our wide range and quality of products.

we possess a thorough understanding of our esteemed clients and hence endeavors to satisfy them as per their needs and specification.



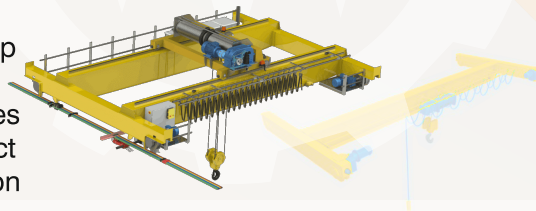
## EOT Crane Repair & Maintenance

### • We Ensure Optimal Crane Performance

we take care of the replacement of spare parts and wheels, change in the existing design, wheel alignments, changing and replacement of motors, hook refurbishment or replacement along with that, we provide maintenance service for electric and electronic parts replacement and upgrades and many more.

### We provide various types of repairing & maintenance services:

- Overhauling of EOT crane
- Crane inspection & Health check up
- Upgrades in crane
- Erection & commissioning of cranes
- Annual crane maintenance contract
- EOT crane modification & relocation
- Gantry Rail Survey & repairs
- Crane repair service
- Fault finding & troubleshooting



### Along with that we provide two types of maintenance & repair services;

1) Emergency service: For that, we allotted a team of technicians and engineers for emergency repair and maintenance service. This emergency service saves customer's valuable time.

Whenever customers find any difficulties with the EOT Crane Operation, mail or call our customer executive to schedule maintenance and repair plans with our technician team.

2) Planned Service: we have a responsibility to take care of our customers. To fulfil our promise of providing the best crane services for customers, we do inspections and surveys.

Here, our expert engineers come for inspection of crane manual to maintain quality of cranes. If they find any faults or future maintenance possibilities after the inspections, they will plan the crane repair or maintenance and complete it in the required time. It helps to avoid the chances of any emergency during operations.

We also undertake replacement of worn out parts, improvement in existing design to reduce need for frequent change of parts, LT wheel replacement, LT wheel alignment including its verticality and skew, Drive alignment, Replacement of Brake Drum and Brake liners, refurbishment of motors and gearboxes, replacement of wire rope and rope sheaves, replacement of hooks, rectification of CT rail level difference, Gantry Rail alignment and Gantry Rail replacement.

Maintenance Services for Electrical System include replacement of motor slip rings and carbon brushes, refurbishment of panel and replacement of worn out parts such as contactors, cleaning of panels and resistance boxes, replacement of damaged cables and cable dressing, replacement of current collector/ shoe and setting of overload relays and limit switches.

We offer spare parts (Electronics, Electrical, mechanical) in extremely reliable and qualitative range of products as per the industry set standards and in diverse specifications



## Annual Maintenance Contracts

In today's competitive era, quality is a prime factor. Quality output from any machine depends on machine's repeat performance. To get repeat performance; machine maintenance is a key factor.

Good maintenance is vital, no matter what kind of maintenance we're talking about. That's why Annual Maintenance Contracts (AMCs) are so popular and so important.

Annual Maintenance Contract (AMC) is maintenance & repair services rendered by the service provider and manufacturers to the customers, at an exchange of prices, once the warranty of manufacturers' warranty is over.

An annual maintenance contract (AMC) is an agreement between a service provider and a customer to repair and maintain equipment/assets regularly in efficient working condition under specific terms and conditions, at the offered cost & for a set period of time.

With the goal to ensure that the terms and conditions are flexible enough to accommodate the client requirements and focused towards achieving a breakdown free operation of the machines, maximizing equipment lifespan and minimizing downtime.

In order to help our customers in getting the best throughput from the machine, we have introduced the concept of Annual Maintenance Contracts for the M/cs.

We provide two types of AMC to customer's equipment/Assets.

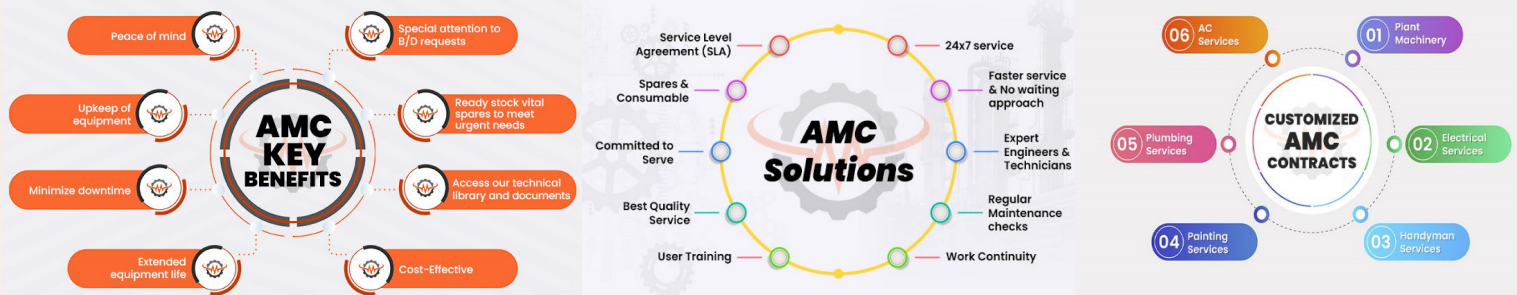
### 1- Comprehensive Annual Maintenance Services

We provide a "Comprehensive Annual Maintenance service" to clients, in which they are assured of guaranteed service from us. In case of equipment failure, replacement will be provided at no additional cost (after adequate inspection). In addition to the above, client will get a response to problem call within 2-4 hours and resolution to the problem within 24-48 hours.

### 2- Non-Comprehensive Annual Maintenance Services

We offer "Non - Comprehensive Annual Maintenance service" to clients, a preventive maintenance of equipment as per schedule, which includes engineering and labour charges. Here, breakdown of equipment or any replacement of parts will be chargeable to the client.

Our comprehensive knowledge bank & expert support can assist you in mechanical, electrical /electronic based problems.



## Custom Engineering/Metal Structural Fabrication services

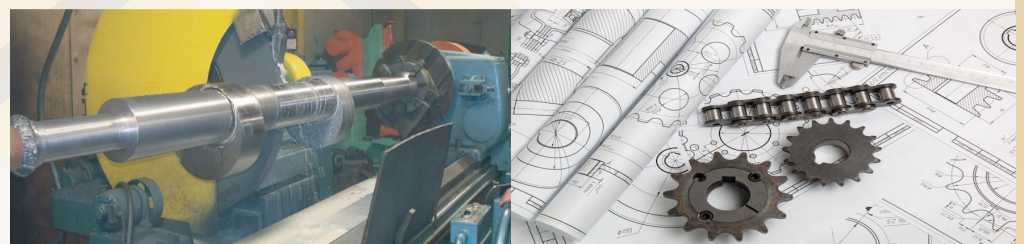
We offer to provide custom metal fabrication services: Stairs case, railing, platform, modular offices, sandwich panel partitions, enclosures, Wire partition panel, storage rack, many more items and tailored made custom machinery fabrication services by using provided drawing, Specifications, bills of materials, and other requirements specified by client to ensure high durability, dimensional accuracy and longer service life to meet customer expectation at very reasonable cost.



## Reverse Engineering (Design & Development)

Reverse Engineering simply aims at "understanding" a system through analysis of its structure, function and operation to update older parts/products for current use.

Reverse engineering helps engineers to understand the product's function, which they can use to create an effective updated version that still meets user requirements.



## Talk to us for more information

- ✓ If any of the services listed above are of interest to you or you require any maintenance, repair services not listed above, please Contact Us on **+91-9979939377** or **+91-7016744382** or email us on [enquiry@ssmsolutions.in](mailto:enquiry@ssmsolutions.in) & [ssmsolutions5521@gmail.com](mailto:ssmsolutions5521@gmail.com)
- ✓ We also have a 24hr emergency call out on **+91-9979939377** or **+91-7016744382**
- ✓ Our team is committed to understanding your unique goals and challenges, we work closely with you to develop customized solutions that address your specific needs.
- ✓ We look forward to a very fruitful and mutually beneficial business relationship with you. If you have any enquiry, kindly forward the same to us.
- ✓ we welcome all enquiries from industrial clients and provide a prompt, FREE no obligation quotation.



# SINGLE SOURCE MAINTENANCE

Precision Repair & Maintenance Today, **Reliable Results Tomorrow...**



## Single Source Maintenance

 **+91-9979939377, +91-7016744382**

 **enquiry@ssmsolutions.in, ssmsolutions5521@gmail.com**

 **www.ssmsolutions.in**

 **Registered Office Address:**

**H-302, Aditya Heights,  
Near Aditya Villa,  
Gurukul Char Rasta,  
Waghodia-Dabhoi Ring Road,  
Vadodara-390025, Gujarat, India.**



**Download Brochure**



**Save Contact**